

R&S®ZS4200

Service and Maintenance Tool

For the R&S®Series4200 ATC radio



R&S®ZS4200 Service and Maintenance Tool At a glance

The R&S®Series4200 is the latest generation of VHF and UHF radios for use in civil or military air traffic control. For easy local setup of the R&S®Series4200 radios, a PC-based service and maintenance tool is available.

The R&S®ZS4200 service and maintenance tool makes it possible to configure the radio via a graphical user interface or read the event messages stored in the radio. This tool is also used to download new software available for the R&S®Series4200.

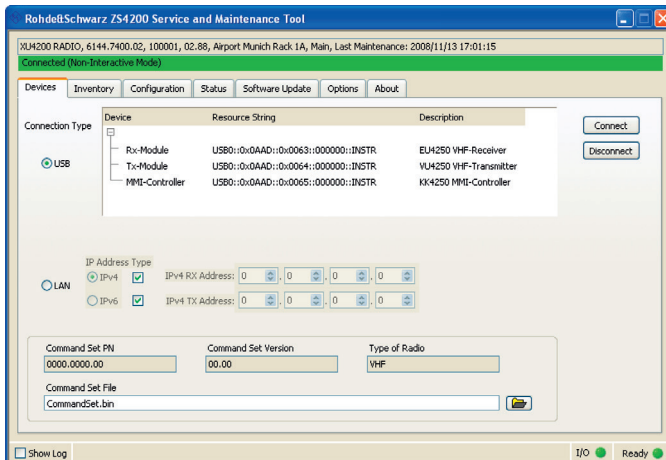
The service and maintenance tool consists of the software for the notebook PC needed for accessing the radio. After connecting the R&S®ZS4200 to the radio's USB port via cable or remotely using an IP-connection, the user can browse through the current setup, change parameters, store the current configuration or retrieve a previously stored configuration.

For local maintenance, the event log in the radio can be uploaded. It stores all relevant warnings, alarms and other events. Inventory information stored in the radio can be read out, giving a clear overview of the serial numbers of modules and their software/firmware versions. New software releases that become available for the radio can be downloaded using this tool. All data retrieved from the radio can be saved on the local drive of the service PC.



Key features

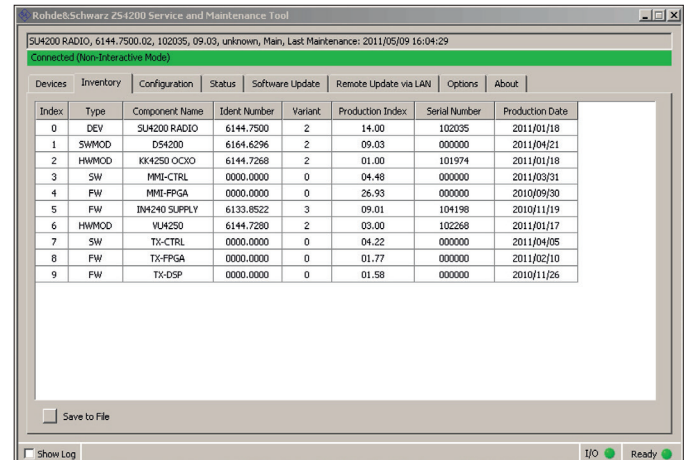
- PC-based tool for radio setup, local maintenance and software download
- Plug & play connectivity to the radio via USB or via LAN-interface
- Setup and configuration as well as “cloning” of radio
- Read-out of radio status and event log, saving of event logs to local hard disk drive
- Display of complete radio inventory, including hardware, firmware and software version, saving of data to local hard disk drive
- Download of software updates to the radio locally via USB or remotely via LAN interface
- Activation of radio software options (option keys)



Plug & play connection to radio.

System requirements

- Min. 400 Mbyte free space on hard disk drive, CD-ROM drive, USB port (version 1.1 or 2.0)
- Windows XP, Windows Vista (xx = .06 to .11), Windows 7 (xx = .10 or later) or Windows 8 (xx = .12 or later) operating system



Electronic inventory of radio.

Ordering information

Designation	Type	Order No.
Service and Maintenance Tool (+ USB cable)	R&S®ZS4200	6133.8722.xx

Your local Rohde & Schwarz expert will help you determine the optimum solution for your requirements. To find your nearest Rohde & Schwarz representative, visit www.sales.rohde-schwarz.com

Service you can rely on

- ▮ Worldwide
- ▮ Local and personalized
- ▮ Customized and flexible
- ▮ Uncompromising quality
- ▮ Long-term dependability

About Rohde & Schwarz

Rohde & Schwarz is an independent group of companies specializing in electronics. It is a leading supplier of solutions in the fields of test and measurement, broadcasting, radiomonitoring and radiolocation, as well as secure communications. Established more than 75 years ago, Rohde & Schwarz has a global presence and a dedicated service network in over 70 countries. Company headquarters are in Munich, Germany.

Environmental commitment

- ▮ Energy-efficient products
- ▮ Continuous improvement in environmental sustainability
- ▮ ISO 14001-certified environmental management system

Certified Quality System
ISO 9001

Certified Quality System
EN 9100

Certified Quality System
AQAP-2110

Certified Quality System
EN 9110

Rohde & Schwarz GmbH & Co. KG

www.rohde-schwarz.com

Regional contact

- ▮ Europe, Africa, Middle East | +49 89 4129 12345
customersupport@rohde-schwarz.com
- ▮ North America | 1 888 TEST RSA (1 888 837 87 72)
customer.support@rsa.rohde-schwarz.com
- ▮ Latin America | +1 410 910 79 88
customersupport.la@rohde-schwarz.com
- ▮ Asia/Pacific | +65 65 13 04 88
customersupport.asia@rohde-schwarz.com
- ▮ China | +86 800 810 8228/+86 400 650 5896
customersupport.china@rohde-schwarz.com

R&S® is a registered trademark of Rohde & Schwarz GmbH & Co. KG
Trade names are trademarks of the owners | Printed in Germany (ch)
PD 5213.5422.12 | Version 05.00 | July 2013 | R&S®ZS4200

Data without tolerance limits is not binding | Subject to change

© 2008 - 2013 Rohde & Schwarz GmbH & Co. KG | 81671 München, Germany



5213542212